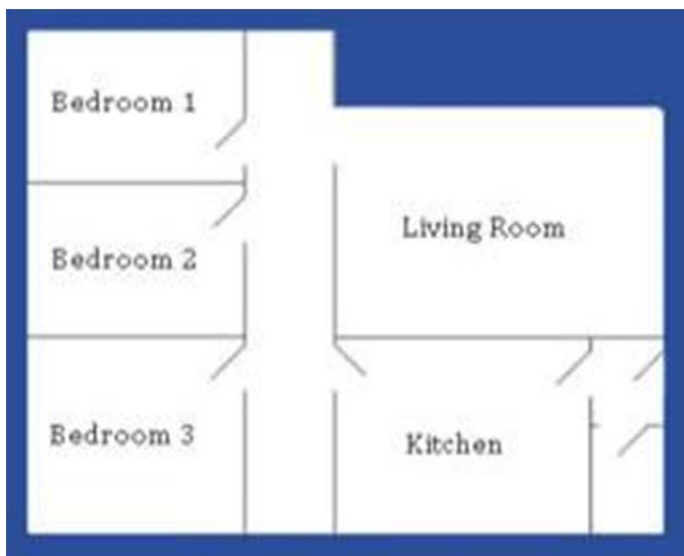


PROPERTY BROCHURE – to be confirmed

KIRKBY LONSDALE – BLUEBELL COTTAGE 2 BED UNFURNISHED TOWN HOUSE



Delightful, unfurnished 3-bedroom Grade II listed cottage in the centre of Kirkby Lonsdale, with parking for 1 (medium sized) car. Newly decorated throughout. Good modern kitchen. No smokers, no DSS and no pets allowed. £650 p.c.m.



Energy Performance Certificate

SAP

Audley Drive
Beeston
NOTTINGHAM
NG9 2JF

Dwelling type: End-terrace house
Date of assessment: 15 February 2012
Date of certificate: 15 February 2012
Reference number: 8756-8074-6230-6932-5920
Type of assessment: RdSAP, existing dwelling
Total floor area: 64 m²

This home's performance is rated in terms of the energy use per square metre of floor area, energy efficiency based on fuel costs and environmental impact based on carbon dioxide (CO₂) emissions.

Energy Efficiency Rating		Environmental Impact (CO ₂) Rating	
Current	Potential	Current	Potential
A	A	D	B
B	B	E	C
C	C	F	D
D	D	G	E
E	E		F
F	F		G
G	G		

EXAMPLE

England & Wales
EU Directive 2002/91/EC

The energy efficiency rating is a measure of the overall efficiency of a home. The higher the rating the more energy efficient the home is and the lower the fuel bills are likely to be.

The environmental impact rating is a measure of a home's impact on the environment in terms of carbon dioxide (CO₂) emissions. The higher the rating the less impact it has on the environment.